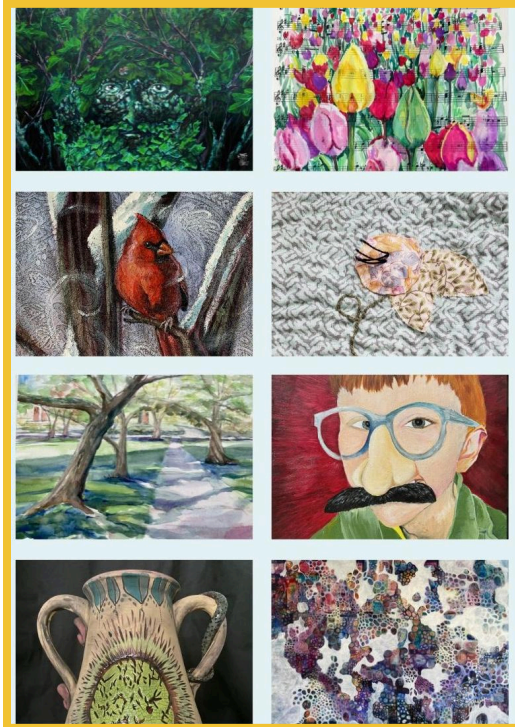




RHODE ISLAND ART EDUCATORS EXHIBIT 2024

August 31st - September 28th



Entry Deadline: Monday, August 5th

WCFA is seeking original works for our upcoming Rhode Island Art Educator's Showcase, an exhibition featuring artwork from those individuals who teach art to others. Art teachers have the unique gift of merging the intricacies of mathematics, the lyricism of language, and the legacies of history in the form of visual communication. This show is intended to celebrate these educators. This show is open to all art educators in RI, including PreK-12, college/university, and adult art education.

AWARDS: \$400 in cash awards: first (\$200), second (\$125), third (\$75), and two honorable mentions.

SUBMISSION FEES:

- **RIAEA MEMBERS:** entry fees for 1-3 images is paid for by RIAEA
- **WCFA MEMBERS:** entry fee for 1 artwork image \$20; 2-3 additional artworks \$35.
- **ALL OTHERS:** one image: \$25; two or three images: \$40

Payments can be made by check (payable to WCFA), or [credit card](#) by phone or online. All payments are non-refundable and due at the time of submission.

ELIGIBILITY:

Works must be original and completed during the last 2 years; works previously exhibited at WCFA will not be accepted. All artwork(s) must be prepared and ready for hanging/display (no sawtooth hangers due to our hanging system). If the work requires a unique display other than wall hanging or pedestal (such as

video) the artist must contact WCFA staff in advance to ensure that the required technology and resources are available.

SUBMISSION REQUIREMENTS:

Complete the [2024 RI Art Educators Exhibit Entry Form](#) located on the WCFA [Call for Art](#) page on our website.

- Artists may submit 1-3 images of work in JPG format saved between 72-100 dpi. You will have the opportunity to upload images directly in the Google form.
- Please remember to **ONLY LABEL YOUR IMAGES WITH THE CORRESPONDING TITLE OF YOUR ARTWORK BEFORE UPLOADING** them into the Google form.
- Please be sure your images are clear, in focus, and well-lit without reflections, background or frame unless it is an integral part of the work. Please do not submit artwork that has colored mats. **All work will be judged for inclusion in the exhibit based upon the photos submitted.**
- Sculptures must include *at least* two views of each piece either as one image or two separate images with uncluttered background.
- Label image files with the name of the artwork (Eg. Artwork Title_1).
- Please include a short artist's statement 4-7 sentences on the submission form.

ARTWORK SALES: All artwork must be available for sale, no "POR" or "NFS". WCFA retains commissions on all artwork sales (30% WCFA Members, 40% non-members).

IMPORTANT DATES:

SUBMISSION DEADLINE: **Monday, August 5th, 2024 11:59pm**

NOTIFICATION OF ACCEPTANCE: via email by Saturday, August 17th

DROP OFF: Wednesday/Thursday August 28th & 29th, 11am-3pm

INSTALLATION: Friday, August 30th

RECEPTION: Saturday, September 7th, 1-3pm

PICK UP: Wednesday, October 9th - 11th

PLEASE REVIEW [the EXHIBIT GUIDELINES ON OUR CALL FOR ART PAGE](#) before applying.

QUESTIONS? Please email exhibits@warwickcfa.org or call (401) 737-0010